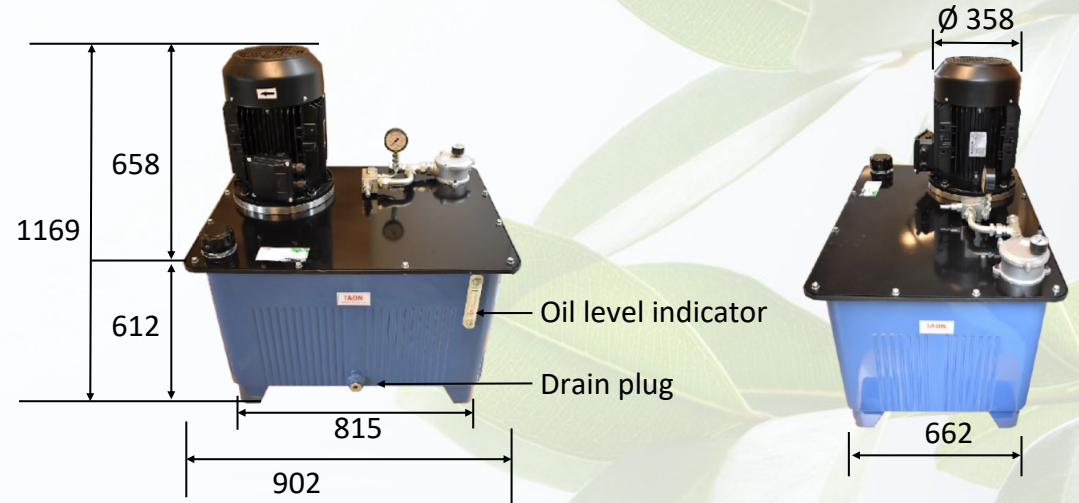


HPU-32 Hydraulic Power Unit



ELECTRIC MOTOR

Power: 30 kW
Voltage: 400/690 V AC
3-phase

PUMP & OIL TANK

Pump displacement: 60 cc/rev
Tank Capacity: 250 liter square tank
Returnfilter 10 μ m

MAX. PRESSURE

P: 200 bar

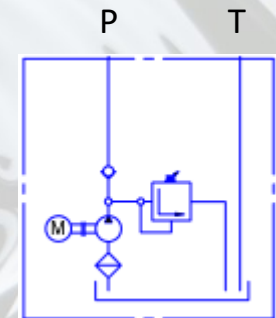
FLOW

85 L/min

Hydraulic Circuit

P = 3/4"

T = 3/4"



TAON Hydraulic Components ApS are specialists in hydraulic solutions, components and tool.

TAON Hydraulic Components ApS • +45 24 48 84 80 • info@taon.dk • www.taon.dk

© TAON Hydraulic will always help you find the best solution.